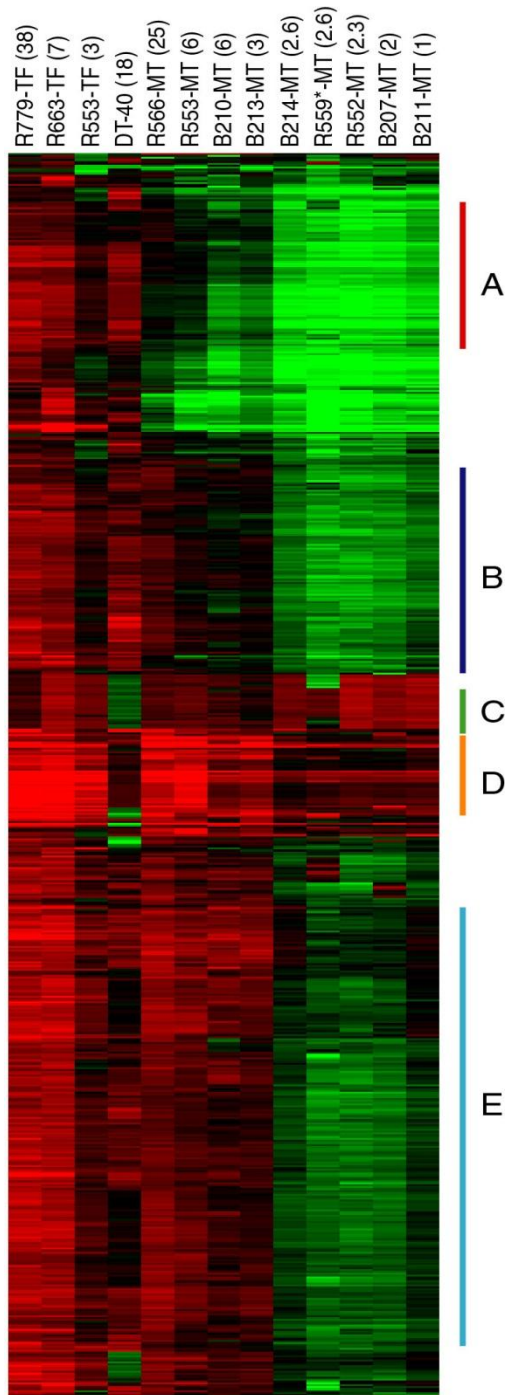


Hierarchical clustering of gene expression across experimentally induced tumors



Gene expression profiles of *myc*-induced neoplastic change in the bursa. cDNAs showing at least a 3-fold change (approx. 800) in expression in one or more cell type were clustered. Groups of genes (y-axis) with similar patterns of expression are indicated by vertical bars (A, B, C, D, E). TF: transformed follicle, DT40: DT40 cell line, MT: metastatic tumor. The fold increase in *myc* expression relative to normal bursa is shown in parentheses.

Get the data!

[Input file](#)

[Group A](#)

[Group B](#)

[Group C](#)

[Group D](#)

[Group E](#)